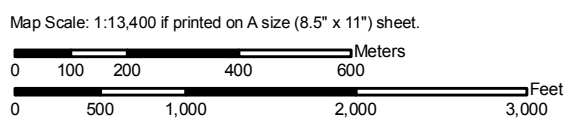
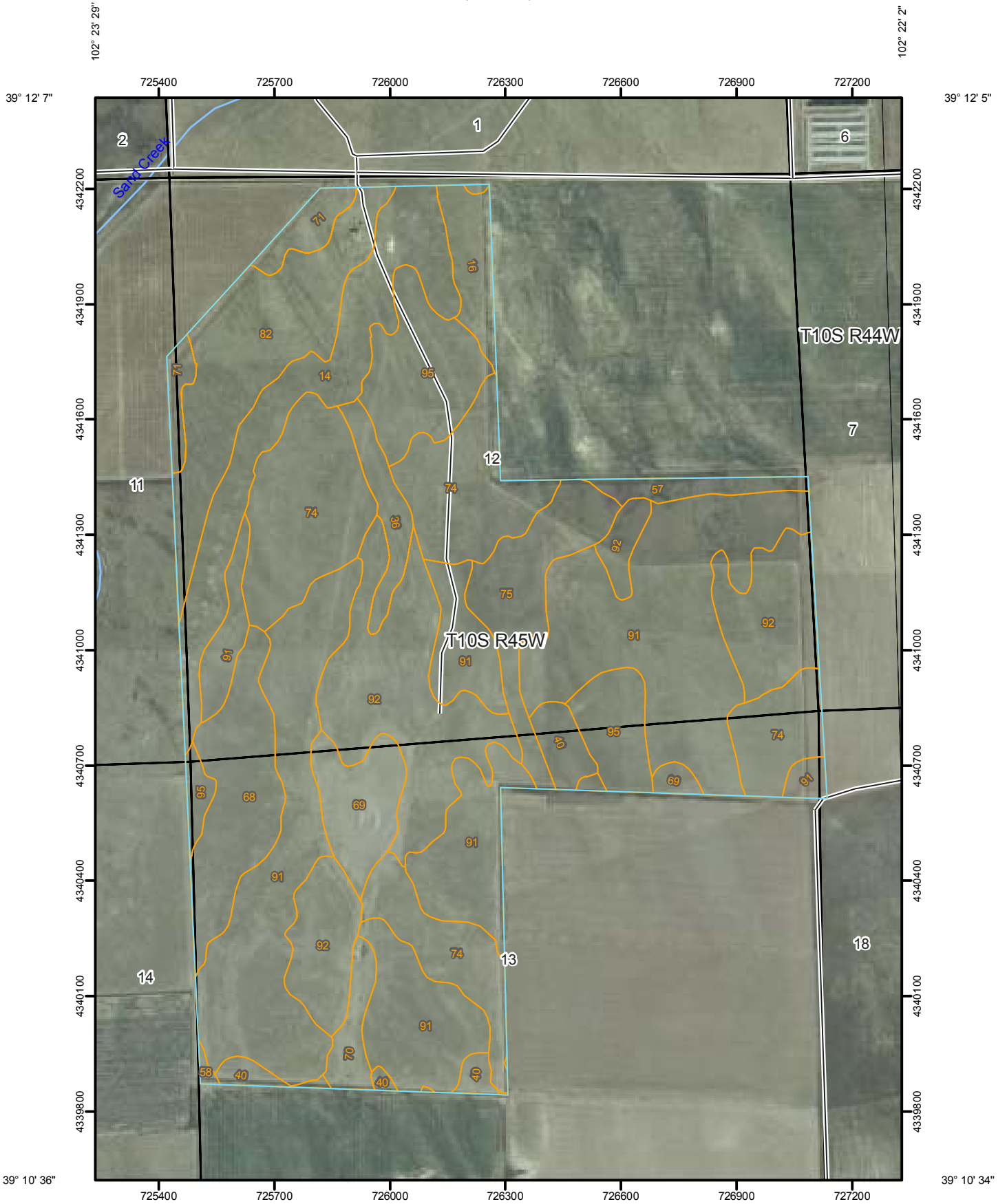


Soil Map—Kit Carson County, Colorado  
(McArthur)



## Map Unit Legend

Kit Carson County, Colorado (CO063)			
Map Unit Symbol	Map Unit Name	Acres in AOI	Percent of AOI
14	Canyon-Rock outcrop complex, 5 to 60 percent slopes	43.4	6.9%
16	Colby silt loam, 3 to 5 percent slopes	10.7	1.7%
36	Kimst loam, 1 to 5 percent slopes	9.0	1.4%
40	Kimst-Wages sandy clay loams, 1 to 6 percent slopes	11.6	1.9%
57	Norka-Colby-Weld silt loams, 3 to 5 percent slopes	6.4	1.0%
58	Nunn sandy clay loam, 1 to 3 percent slopes, eroded	0.7	0.1%
68	Platner loam, 0 to 3 percent slopes	29.2	4.7%
69	Pleasant silty clay loam, 0 to 1 percent slopes	18.1	2.9%
70	Rago silt loam, 0 to 2 percent slopes, occasionally flooded	7.0	1.1%
71	Rago-Weld silt loams, 0 to 2 percent slopes	9.9	1.6%
74	Richfield silty clay loam, dry, 0 to 2 percent slopes, eroded	91.3	14.6%
75	Sampson loam, 0 to 2 percent slopes, rarely flooded	24.2	3.9%
82	Stoneham-Kimst-Fort Collins loams, 5 to 15 percent slopes	44.8	7.2%
91	Wages loam, 2 to 6 percent slopes	192.3	30.7%
92	Wages loam, 6 to 15 percent slopes	87.3	14.0%
95	Weld silt loam, 0 to 2 percent slopes	39.7	6.3%
<b>Totals for Area of Interest</b>		<b>625.6</b>	<b>100.0%</b>